



Term 1 Week 8

PARENT TEACHER INTERVIEW BOOKINGS –

Bookings for Parent Teacher Interviews to be held on Wednesday 29th March will only be available through the Parent Portal.

Log into the Sentral Parent Portal (if you don't have a parent portal account you will need to set one up. Another email was sent last week for parents to register. (Search bounce@messaging.sentral.com.au – it may be in your junk folder) if you can't see it. You can also view a recorded session on how to sign up at <https://tinyurl.com/HCSmeeting> For help with the Sentral Parent Portal App visit on the following link. <https://www.sentral.com.au/portal-app-help#faq>

1. After **logging in**, you will be taken to the dashboard. **Select the Interview Tab.**
2. **Select Timeslots.** You will see a list of all your child's subjects, classes and teachers. For each teacher you want to meet, click the Select Timeslot button. This will show you the timeslots available for the teacher of that subject. Click on a time to reserve that time. You will notice that when you start making bookings that the other timeslots you have chosen will be grey so you don't double book yourself.

Secondary Classes will be displayed as a stage and then a subject code.

E.g. S4ENG will be Stage 4 English. Your child will know the codes if you are unsure. If you are still unsure please call the office if you need help.

Stage 4 refers to Year 7 and Year 8.

Stage 5 refers to Year 9 and Year 10

Year Advisor interviews are listed below all of the secondary classes with no subject attached.

Secondary Year Advisors are;

Year 7 – Germaine Schooling

Year 8 – Ali Harding (Unavailable - another time to be decided)

Year 9 – Owen Cooper

Year 10 – Robin Bartholomew

3. **Save bookings** Your selected appointments for each subject will show at the bottom of the page. Once you have finished booking all your timeslots you need to click on **Save Bookings** or your reservations will be removed so that others may book them. You will receive a confirmation email from bounce@messaging.sentral.com.au

4. If you don't feel the need to see a certain teachers then click Not Attending

5. You can go back into the Parent Portal at any time and manage your own bookings if you need to change them.

6. If you are experiencing difficulties completing your booking, please contact the school on 69672277. Please note: Your session will timeout after 10 minutes. This means that if you leave your computer/app for more than 10 minutes, any reserved booking will be released and other parents can choose them.

Upcoming Dates

Mar 15—Mar 27
NAPLAN

Mar 15
Open Girls Basketball

Mar 17
RAP Study Day

Mar 20
Kinder/Yr. 1 Dentist

Mar 21
Harmony Day
Primary Assembly

Mar 29
Parent Teachers Interviews
Book online at Sentral Parent
Portal

Mar 31st
School Cross Country

April 4
Principal's Assembly
Primary Easter Hat Parade

Hillston Central School acknowledges the Wiradjuri people who are the traditional custodians of the lands on which our school is located. We pay our respects to Elders, past, present, and emerging. We extend our respects to all Aboriginal and Torres Strait Island students enrolled in our school. Hillston Central School is committed to honouring Australian Aboriginal and Torres Strait Islander peoples' unique cultural and spiritual relationships to the land, waters and seas.

SCHOOL NEWS

Australian Geography Competition 2023

When: 10th —24th May 2023

Cost: \$4 per student (GST exempt)

Entries close 17th March.

Open to Year 7 to 12 students.

About: The competition involves Geographical knowledge and skills through multiple –choice

Questions that aligned with the Australian Curriculum: Geography. Delivered online and runs for 35mins. Certificates for all participants and prizes for high achievers.

For more information visit <https://www.geographycompetition.org.au/> .

Please complete the form below and return to the office before the 17th of March if you would like your child to participate.

Teacher in charge: Mrs Jatan

AUSTRALIAN GEOGRAPHY COMPETITION ENTRY FORM
NAME:
YEAR:
AMOUNT:
Parent/Guardian Signature:

School Hats

School hats are available from our Front Office for \$20 each. We have a variety of styles and sizes including bucket, wide-brim, caps and flat



SCHOOL HOURS

Primary: 8:55am-2:50pm

Secondary: 8:55am-3:25pm

Students are welcome onsite following the morning bell at 8:30am.



Hillston Central School Student use of Digital Devices

Phone Free School for students K-12

As of Term 1 2023 handheld technologies ie mobile phones & watches must not be used by Hillston Central School students while on school grounds. For the purpose of this policy, a mobile phone is a device with access to a cellular (telecommunication) system, with or without a physical connection to a network.

HCS acknowledges that parents may wish students to be in possession of mobile phones for reasons relating to their safety when travelling to and from school or for medical reasons.

Students who choose to bring mobile phones to school must have them switched off and securely stored during school hours. The school has lockers available for hire for students in these situations. The student must take full responsibility for their devices. The school or staff will not be responsible for their loss, theft or damage. Students who bring them to school do so at their own risk.

Exceptions

- students with a health condition documented in the Student Health Support Plan. managing students offsite, this is at the discretion of the excursion coordinating teacher.

Breaches of this policy:

If a student interacts with a device or staff observe a device being used during school time:

1st offence = device handed in to office, collect at home time and student up a Level in our behaviour system.

2nd offence = hand in to office and parent contacted for a meeting with Executive to collect device and student up a Level in our behaviour system.

Persistent misuse of devices in school may result in further consequences for students such as revoking the privilege of bringing digital devices onto school property or other appropriate measure as determined by the Executive in line with the school's discipline policy.

Other disciplinary action will be taken in cases where students have bullied, threatened or harassed other students or staff via a digital device or where the device has been used to take photographs or display inappropriate material. In cases where it is confirmed or reasonably suspected that a criminal offence has taken place, the matter will be handed over to the police.

Parent Responsibility

If a parent or caregiver needs to contact a student at school as a result of an emergency, they are required to call the school's main office on (02) 6967 2277 and a message will be sent immediately to the student. If a student needs to make emergency contact with anyone they are to do so through the school's main office.

SCHOOL NEWS

SCHOOL FEES 2022

Primary	\$50
Secondary Years 7-10	\$80
Secondary Years 11-12	\$85
ELECTIVE FEES	
School Band	\$50
STAGE 5 ELECTIVE FEES	
Agriculture	\$40
Food Technology	\$50
Industrial Technology— Timber	\$50
Industrial Technology— Metal	\$50
STAGE 6 ELECTIVE FEES	
Agriculture	\$40
Industrial Technology— Timber	\$85
Visual Arts	\$40
Industrial Technology— Metal	\$85
Vet Primary Industries	\$85
Visual Design	\$40

AEROSOLS

A reminder that aerosol sprays including deodorant and insect repellents are not permitted at our school.



ABSENCES & ATTENDANCE

In New South Wales, 'compulsory school-age' means that all children from six years of age are legally required to be enrolled at and attending school until they complete Year 10, and until they turn 17 years of age.

Parents or carers are responsible for making sure that their children comply with these legal requirements. Schools support parents by monitoring student attendance and helping to address attendance issues when they emerge.

Regular attendance at school is essential to assist students to maximise their potential. Should your child be absent from school, please ensure a note is sent with your child to their class teacher (Primary), Year Advisor (Secondary) or front office on return to school, giving reason for absence. Alternatively, you can call the front office at the school to explain the absence or submit a notification on the Skoolbag app. If your child is away for a few days you should try to bring a Doctor's Certificate. If your child is to be absent for 4 days or more please see the office to obtain an "Application for Exemption" form prior to your departure date. If the absence is for 3 weeks or more parent/guardians must have an interview with the Principal. Parents/Guardian must complete the appropriate forms from the Department of Education and provide a letter explaining the reason for absence.

Arriving Late or Leaving Early – If arriving late students must present at the office. Students are not permitted to leave the school grounds during school hours without written permission or they are collected from the front office by their parents/carer. On the rare occasion that leaving early is necessary, a note signed by a parent/carer indicating reason for early departure should be handed in to the office by 9am.

Primary Slab

Just a reminder to parents, Primary School finishes at 2:50pm.

If your child is in primary and travels by bus to school they will remain on Slab for playtime until the bus collects them at 3:25pm. Students who do not travel by bus are required to leave school grounds at 2:50pm. If for any reason you require your child to stay behind until 3:25pm, please contact the Front Office.



HEAD LICE: Information, Treatment & Controlling

What are head lice?

Head lice are tiny (2-3mm long) wingless insects that can attach to a person's hair, where it feeds on extremely small amounts of blood drawn from the scalp. Lice aren't dangerous and they don't spread disease. LICE EGGS (nits) are seen more commonly than live lice in children's hair.

Signs and Symptoms

- Severe itching of the scalp
- Nits (tiny oval specks of greyish white or yellow white on the hair shaft)
- Lice (tiny reddish brown insects on the hair shaft)
- *Sometimes there are no symptoms.*

What can we do?

Check your child's hair regularly, particularly behind the ears and at the base of the skull.

If you see lice or eggs (nits) your child should be treated before they return to school. Suitable preparations can be purchased at your local pharmacy or supermarket.

Check the rest of the household for lice and only treat if they are detected. Treat everyone affected **on the same day**.

A way to help detect lice is to use conditioner on dry brushed hair, comb it through then wipe the comb onto a paper towel or tissue, look on the tissue and comb for lice or eggs. Conditioner stuns lice for 20 minutes which allows you to comb thoroughly through the hair.

Prevention

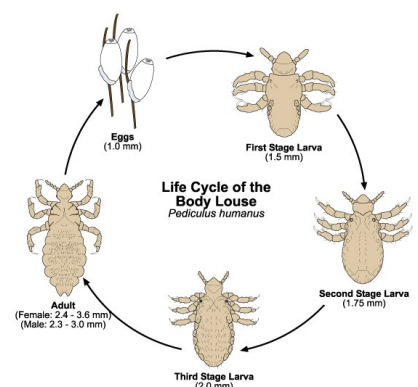
- Avoid head-to-head contact
- Don't share brushed combs or hats
- Discourage children from playing with each other's hair
- Keep long hair tied back or plaited
- Check hair regularly, including both children and adults.

Is a second treatment necessary?

In almost all cases a second treatment is needed as no head lice treatment kills 100% of the eggs. You must repeat treatment on Day 7 with the same product if lice are found at the second treatment and they are killed by the treatment, you must then re-treat within 7 days or use the comb and conditioner method to check for lice.

Helpful hints

- Do not use a conditioner on hair before or after treatment.
- Do not blow dry hair after treatment as heat may inactivate treatment.
- Do not wash hair for one or two days after treatment.



Note: Lice take several blood meals daily in larval stages and as adults.

SCHOOL NEWS

Hillston Central School P&C

Have you thought about joining the HCS P&C? The start of a new school year is a good time for us as parents and carers to consider ways we can be more involved in our child's schooling. It's a great thing to be able have an input into your local school. It's also good to be able to contribute financially through fundraising, so that school facilities can be improved. And it's very beneficial to meet regularly with the school principal and be informed about achievements, changes and new developments as well being able to give feedback. The P&C enables you to do all of this. As well as that, our monthly meetings are a chance to catch up with other parents/carers who are equally as interested in the school as you are. At a broader community level, the P&C is one of those local associations that serve the community and help out with catering for funerals and other occasions. This and other groups are important in keeping the "fabric" of towns like Hillston together.

We encourage you to come along to our **AGM tonight at 7.00pm at the Hillston Ex-servicemen's Club** or the 2nd Tuesday of each month

HCS P&C Executive

Health Care Plans

If the school doesn't already have any information regarding your child's health issues, please contact the Front Office and you will be given a form to complete.

Nut Allergies

Please be aware that we have students at HCS who have severe allergies to food products, mainly nuts, that may result in serious consequences including hospitalisation. Please consider this when packing your child's lunch—we aim to minimise health risks to all students.

Classroom teachers encourage students to ensure thorough washing of hands and face, and to distance themselves from students with allergies if they bring nut products to school.



**HOT DOG DAY
CANTEEN SPECIAL
FRIDAY 17th March
\$4.00**

Online Payments & EFTPOS Available

You are now able to make any payment for school on our website from excursion payments to school fees. This can be done on any device.

Just go to our school webpage and click **"MAKE A PAYMENT"**



Hillston Central School

Quality learning in a caring community school

T: 02 6967 2277

E: hillston-c.school@det.nsw.edu.au

[MAKE A PAYMENT](#) | [ENROLMENT](#) | [NEWS](#) | [NEWSLETTER](#) | [EVENTS](#) | [GALLERY](#)

We also have an EFTPOS machine for payments for your convenience.



Secondary Parents

Wednesday 14th March 2023

Microsoft Teams (MS Teams) is the learning program that our Secondary students use at school.

We will be providing a face to face workshop to help parents understand how to use MS Teams to be able support their child's learning.

Ali Harding will provide face to face training on Wednesday 14th March at 7pm, in the Tech Hub (annex). A link will be provided for those who wish to connect from home. It will be recorded and made available on the school website.

SCHOOL NEWS

Uniform Process



Student Expectations

- A student out of uniform is required to bring a signed note from their parent/carer explaining the reason. Roll Call/Class teacher signs, dates and strikes through the note and does not record on Sentral as student has followed procedure.
- A student out of uniform without a signed note from parent/carer will be recorded on Sentral and given a yellow Uniform Slip by their Roll Call/Class Teacher. The student is required to meet the Uniform Coordinator at the beginning of recess and present the uniform slip for it to be signed and dated.

Consequences

- A student who fails to follow procedure by meeting the Uniform Coordinator at recess will be given a Communication Slip. This will be recorded on Sentral by the Uniform Coordinator and will be managed through our behaviour system.
- Students who are out of uniform will not be able to represent the school on the day of extra-curricular events (including sports) or represent and/or receive awards at assemblies.

Support

- A student who is persistently out of uniform, with or without a signed note from the parent/carer, will be discussed by the Uniform Coordinator and Year Advisor/Class Teacher. The parent/carer will then be contacted by the Uniform Coordinator/Class Teacher to see if the school can provide any support with the issue.
- A student who is out of uniform will be directed to the Front Office to borrow items of school uniform for that day, if available.

Reminders

- Under no circumstances are "hoodies" to be worn to school.
- Representative attire is not part of our school uniform.
- Hats are to be worn at all times when outside.
- School shoes are to be black.
- Layers worn under school uniform are not to be visible (e.g. "skins" etc.)
- School shorts are plain navy with no stripes or logos other than the school initials

UPDATED CANTEEN PRICE LIST



Salad Tubs

e GARDEN SALAD	\$5.00
salad leaves, carrot, cucumber, cheese, tomato	
e ADD HAM/ FRESH CHICKEN /TUNA	\$6.50
e ROAST PUMPKIN SALAD	\$5.00
salad leaves, pumpkin, cucumber, onion	
e GREEK SALAD	\$6.00
salad leaves, tomato, cucumber, onion, olives	
ADD FETTA	\$6.50
e SC CHICKEN GARDEN SALAD	\$7.50
sweet chilli tenders, salad leaves, carrot, cucumber, cheese, tomato	

Sandwiches, Wraps Rolls

All sandwiches on grain bread unless you specified.

Gluten Free bread available,

Other filling options available on request.

e SALAD SANDWICH (NO MEAT)	\$3.50
e SALAD ROLL (NO MEAT)	\$4.50
e SALAD WRAP (NO MEAT)	\$4.00
e HAM SALAD SANDWICH	\$4.50
e HAM SALAD ROLL	\$5.50
e HAM SALAD WRAP	\$5.00
e CHICKEN (FRESH) SALAD SANDWICH	\$4.50
e CHICKEN (FRESH) SALAD ROLL	\$5.50
e CHICKEN (FRESH) SALAD WRAP	\$5.00
e SWEET CHILLI CHICKEN WRAP	SMALL \$4.50 LARGE \$7.00
e HAM & CHEESE SANDWICH	\$3.00
e HAM & CHEESE ROLL	\$4.00
e HAM & CHEESE WRAP	\$3.50
e HAM, CHEESE, TOMATO SANDWICH	\$3.00
e HAM, CHEESE, TOMATO ROLL	\$4.00
e HAM, CHEESE, TOMATO WRAP	\$3.50
e CHEESE, TOMATO SANDWICH	\$3.00
e CHEESE, TOMATO ROLL	\$4.00
e CHEESE, TOMATO WRAP	\$3.50
e CHEESE SANDWICH	\$2.00
e CHEESE ROLL	\$3.00
e CHEESE WRAP	\$2.50
e VEGEMITE SANDWICH	\$2.00
e JAM SANDWICH	\$2.00
e TUNA & SALAD SANDWICH	\$4.50
e TUNA & SALAD ROLL	\$5.00
e TUNA & SALAD WRAP	\$4.00

e EVERY DAY CHOICE
o OCCASIONAL CHOICE

UPDATED CANTEN PRICE LIST



Toasties - Sandwiches

e HAM,CHEESE, TOMATO TOASTIE	\$4.50
e HAM & CHEESE TOASTIE	\$4.00
e CHEESE TOASTIE	\$3.00

Toasties - Turkish Bread

e #1 HAM,CHEESE ON TURKISH	\$5.50
e #2 CHICKEN,ROCKET,C.G CAPSICUM,AIOLI	\$7.00
e #3 HAM, CHEESE, SEMI DRIED TOMATOES	\$6.50
e #4 CHICKEN,CHEESE, MAYO, ONION	\$7.00
e #5 TURKEY,CRANBERRY,ROCKET,CHEESE	\$7.00

Burgers / Hot Foods

e BEEFBURGER	\$6.00
homemade beef pattie,lettuce,cheese,tomato,beetroot, sauce	
O CHICKEN BURGER	\$8.00
schnitzel breast,lettuce,cheese,mayo	
O CHICKEN & BACON BURGER	as above add bacon \$10.00
e VEGGIE BURGER	\$5.00
veggie pattie,lettuce,cheese,tomato,BBQ sauce	
e CHICKEN & GRAVY ROLL	\$4.50
O SWEET CHILLI CHICKEN TENDER	\$1.50
O CHICKEN CRACKLES (6)	\$3.60
O PIZZA SINGLE	Cheese & Ham or Hawaiian \$3.00
O SWEET POTATO WEDGES	\$4.00
O PIE LITE'N UP	175 GRAMS \$5.00
O SAUSAGE ROLL LITE'N UP	120 GRAMS \$3.80
O VEGETABLE PASTIE	165 GRAMS \$4.60
O TOMATO SAUCE	30 CENTS
O SPINACH & RICOTTA ROLL	140 GRAMS \$4.00
O NOODLE CUP	Chicken or Beef \$3.00

e MINI VEGEMITE ROLL (SMALL)	60 CENTS
O HOT BREAD (CHEESE & BACON)	\$1.80
e ASSORTED SEASONAL FRUIT	FROM 60 CENTS
O HEALTHY FRUIT MUFFIN	\$1.50
e SNACK PACK	\$3.00
e POPCORN HOMEMADE	80 CENTS
e FRUIT SALAD	SMALL \$2.00 LG \$4.00
e ADD YOGHURT	SMALL \$2.50 LG \$4.50
e ADD YOGHURT & MUESLI	SMALL \$3.00 LG \$5.00
e RAISIN TOAST 1 SLICE	60 CENTS
O GRAINWAVES 28 GRAMS	\$1.60
O CHIPS 28 GRAMS	\$1.60

Snack Foods

	rice crackers,carrot,celery, sweet chilli philly
	80 CENTS
	SMALL \$2.00 LG \$4.00
	SMALL \$2.50 LG \$4.50
	SMALL \$3.00 LG \$5.00
	60 CENTS
	\$1.60 Sour Cream & Chives
	\$1.60 Plain

Cold Drinks / Icy Poles

e JUICE POP TOP 100% JUICE 250 ML	\$2.20	orange, apple, apple & blackcurrant
e MILK - PLAIN 300 ML	\$2.00	
e MILK - FLAVOURED 98.5% Fat Free 300ML	\$3.00	chocolate or strawberry
e CHILL J 100% Sparkling Fruit Juice 250ml	\$2.40	grape,raspberry,watermelon,orange
e UP N GO LIQUID BREAKFAST	\$3.50	
e WATER 600 ML	\$2.00	
e BERRI FRUIT JUICE QUELCH / TNT ICY POLE	60 CENTS	

COMMUNITY NEWS



APPLICATIONS OPEN

14TH AUGUST – 15TH OCTOBER, 2023

AgCAREERSTART IS A 10-12 MONTH GAP-YEAR PROGRAM TO KICK-START YOUNG AUSTRALIANS' CAREERS IN AGRICULTURE.

This unique gap-year program provides you with a paid job, training and development, not to mention the opportunity to build your networks within the agriculture industry.

You can identify the type of farm and location that you would prefer to be placed in. A matching process is undertaken to ensure participants are assigned to the type of farms that match your interests and skills.

WHO IS ELIGIBLE TO APPLY?

- Anyone aged from 17-25 can apply
- Must be legally able to work in Australia
- Driver's license preferred
- Previous experience in agriculture not required, but welcome

WHAT'S IN IT FOR ME?

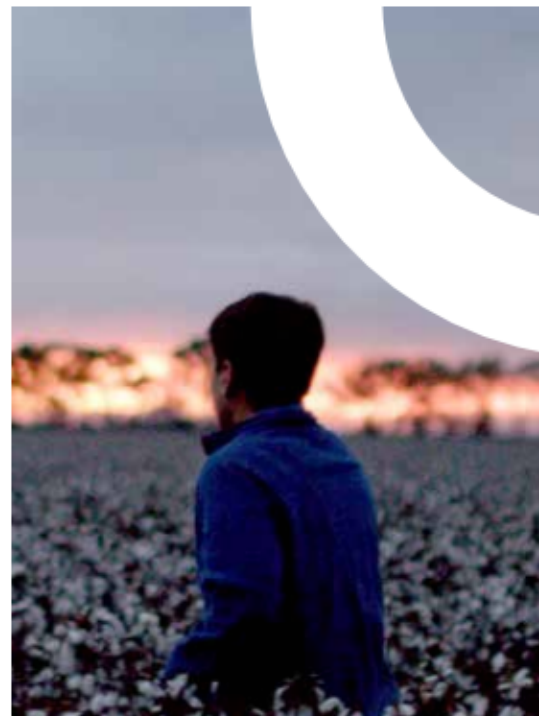
- Full-time paid farm job with a passionate host farmer
- A \$4,500 Training and Engagement Bursary to upskill yourself
- Funding to travel to industry events
- A dedicated support team
- A network of peers across the country



COMMUNITY NEWS

You've decided you're ready to start your gap-year in agriculture. Here's how the AgCAREERSTART application process works.

1. Head to the application page on the website to download a practice application.
2. Prepare your 800-word written statement OR a 5-minute video telling us why you'd like to do a gap-year on an Australian farm and why we should select you.
3. Prepare a resumé to submit with your application that tells us about your work history, your education, key skills, and any extra-curricular activities.
4. Send the AgCAREERSTART Reference Template to your character referee
Note: your referee must not be related to you.
5. Submit your application via the AgCAREERSTART website, before the deadline.
6. Sit tight! The AgCAREERSTART team will process your application and let you know if you have been shortlisted by Friday 20th October, 2023.
7. The AgCAREERSTART team will commence matching shortlisted applicants and you will be notified of the outcome via email.
8. If you are matched with a host farm, you will be invited to attend an interview; online or in person.
9. Pending the outcome of your interview*, you will be offered a placement on-farm for 2024. At this stage, you will also select a start date with your host farmer.
10. Pack up your things, and head to farm to start your AgCAREERSTART placement!



*In the case of an unsuccessful interview, your application will re-enter the matching process and you may be matched with another host farm. AgCAREERSTART is a competitive program and not all applicants will be successful in securing a placement. Applicants who demonstrate enthusiasm and responsiveness will be given preference.

GAVIN | HOST FARMER

Placement Industry: Cotton and Grain
Location: Griffith, New South Wales



Host farmer Gavin came to the AgCAREERSTART program looking to build his workforce on farm, and provide an opportunity for a young person to get started in the industry. Gavin was searching for someone who wanted to learn about cotton and the vast array of technology that he uses on farm. Gavin's participant, Julian, moved from Canberra and was able to experience the full scope of the cotton season, all the way from planting to picking. From the day he started, Julian was operating multi-million-dollar pieces of machinery, and Gavin even had him capturing and analysing farm data using sophisticated software programs. Like many of our host farmers, Gavin believes that it's more important that young people are keen and enthusiastic than whether or not they have a lot of experience.

For more detailed application information, visit: agcareerstart.com.au



For handy videos about the program, check out our YouTube!

agcareerstart.com.au

